



JEWISH FAMILY SERVICE  
★ OF THE LEHIGH VALLEY ★

# ANNUAL REPORT

## 2021-22



# A MESSAGE FROM OUR LEADERSHIP



**Debbie Zoller**  
*Executive Director*

Dear Friends,

The start of 2022 marked the 50th year of our Jewish Family Service. What a great opportunity to celebrate our past and plan for the future. We collected interviews of past directors, board presidents, volunteers and clients and kicked off our 50 Acts of Kindness initiative.

Our leadership continued to flourish by attracting capable board members of diverse backgrounds throughout the Lehigh Valley. These board members worked alongside our amazing professional staff and dedicated volunteers to continually seek new ways to enhance our services and programs.

JFS looks forward to going from strength to strength to continue helping individuals and families to live healthier and more stable lives. Thank you for everything that you do to make our agency and our community stronger.

Sincerely,

Debbie Zoller



Thank you to  
**Rabbi Allen Juda**  
for the completion  
of 5 years of service  
as Board President



## OUR MISSION

**Jewish Family Service of the Lehigh Valley, guided by Jewish values, helps individuals and families to live healthier and more stable lives by providing social services, professional counseling, education and community programs.**

## OUR VISION

**No one in our community should suffer hunger, isolation, abandonment, emotional or physical distress, or lack of community support and caring.**

# COMMUNITY FOOD PANTRY

**76,000 lbs**  
of food distributed

**177**  
households

**614**  
individuals

**216**  
children

JFS's Community Food Pantry provides food and essential items to individuals and families living in the **18104 zip code**, **regardless of religion**. The food pantry also serves Jewish clients across the Lehigh Valley.

Our **choice-model pantry** gives clients the opportunity to select the foods each month that will best feed their families.



*I think the pantry is great. It saved my life many times. I don't know what I would do without you. I can't possibly thank you enough. It makes me smile every time I walk in the door.*

Anna M.  
Food Pantry Client



# OLDER ADULT SERVICES

Older adult case management helps our clients navigate the complex maze of aging services. Our licensed clinical social workers partner with clients and their families in developing care plans that meet their specific needs. We help clients with **in-home support**, access to **food** and **housing**, combating **social isolation**, **spiritual needs** and so much more.



*One of my greatest joys as the campus chaplain has been to see our rather unique interfaith community come together to learn, honor and enjoy the beauty of the Jewish faith and to build stronger ties with the Jewish community at large.*

Pastor Diane McCready  
Country Meadows

**130**

case management clients

**64**

friendly visits

**349**

outreach calls

**164**

ShareCare rides

**207**

participants in Jewish Holiday Outreach programs



# COUNSELING

452

counseling hours

- Depression
- Anxiety
- Grief & Loss
- Relationship Issues
- Family Issues
- Loneliness
- Health/Aging Challenges
- Parenting
- Isolation

Licensed clinical social workers at JFS provide **confidential counseling** for individuals, couples, and families of all ages.

Working with an experienced therapist, clients can develop **strategies to cope** with change, loss, or the stresses of everyday life.

We serve people of **every race, religion and financial status.**



*All JFS counseling and social service support is completely confidential.*

*Medicare and insurance are accepted for covered services.*

*We utilize a sliding fee scale for private pay clients.*





# ACCESSIBILITY & INCLUSION

We are dedicated to helping **community agencies** become **more accessible and inclusive** **AND** to **helping individuals with disabilities** live healthier and more stable lives. We provide **education** and **best practices**, partnering with local synagogues and community agencies to offer training and professional development.

## NEW INITIATIVES

### JDAIM Virtual Town Hall

JFS and the Jewish Federation partnered in February to sponsor the community's first-ever town hall on creating a more inclusive community. The town hall brought together people with disabilities, clergy, community leaders and families to voice their experiences and suggestions and help identify needed changes.

### Accessibility & Inclusion Committee

To continue the conversation from the Virtual Town Hall, JFS created its first Accessibility & Inclusion Committee. The committee is made up of representatives and/or advocates of the disability and LGBTQIA communities. The committee's goal is to provide information and education to local Jewish agencies and synagogues. It seeks to raise awareness regarding barriers to full participation and give a voice to those who have diverse types of abilities and those who identify as LGBTQIA.



# VOLUNTEERS

Volunteers are crucial to the work of JFS in caring for our community. Our staff, and the individuals and families we serve, greatly appreciate the passion and enthusiasm volunteers bring to our programs and services.

**2,171**  
volunteer hours

**80**  
volunteers

- Friendly calls and visits
- Shabbat and holiday programs at residences
- Rides for clients
- Mazel Meals delivery
- Stock the food pantry
- ... and more!

## Our volunteers tell us ...

*It is so satisfying for me knowing that I am helping others. One thing I particularly like is speaking to older adults as a friendly phone caller because sometimes I may be the only one they speak to that day.*



**Jane Pitkoff**  
**Volunteer**



*I started volunteering at JFS by driving clients. It is important to keep people in their homes and independent as long as possible and this is one way to help accomplish that goal.*



**Irving Kaplan**  
**Volunteer**



*Volunteering at JFS gives me the personal satisfaction that I can give back to the community and make a difference in the lives of others*



**Clara Bergstein**  
**Volunteer**



# BOARD & STAFF

**Rabbi Allen Juda**  
*President*

**Marcia Berkow**  
*Vice President*

**Audrey Nolte**  
*Vice President*

**Robin Rosenau**  
*Vice President*

**Pam Lott**  
*Secretary*

**Susan Sosnow**  
*Treasurer*

**Wendy Born**  
*Immediate Past President*

*Board Members*

**Andrew Ellis**

**Michael Finley**

**Emily Ford**

**Roberta Gaines**

**Barry J. Halper**

**Ellen Hof**

**Stuart Horowitz**

**Cary E. Moritz**

**Rabbi Steve Nathan**

**Andrea Reich**

**Lorrie Scherline**

**Kimberly Valuntas**

*Emeritus*

**Tama Fogelman (z”l)**  
**Beverly Volk**

**Debbie Zoller**  
*Executive Director*

**Rebecca Axelrod-Cooper**  
*Impact Coordinator*

**Amy Buchanan**  
*Finance & IT Coordinator*

**Chelsea Karp**  
*Volunteer & Grant Development Coordinator*

**Phyllis Kaufman**  
*Office Coordinator*

**Sarah Morse**  
*Administrative Assistant*

**Jennifer Oxfeld**  
*Volunteer Liaison*

**Wendy Rapoport**  
*Clinical Social Worker*

**Marcia Schechter**  
*Outreach – Older Adults*

**Jacqui Schwartz**  
*Program Coordinator*

**Rachel Shurman**  
*Administrative Assistant*

**Amanda Thomas**  
*Accessibility & Inclusion Coordinator*

**Doug Trachtman**  
*Food Pantry Liaison*

**Carol Wilson**  
*Program Manager &  
Community Liaison for Older Adults*



# 50 ACTS OF KINDNESS

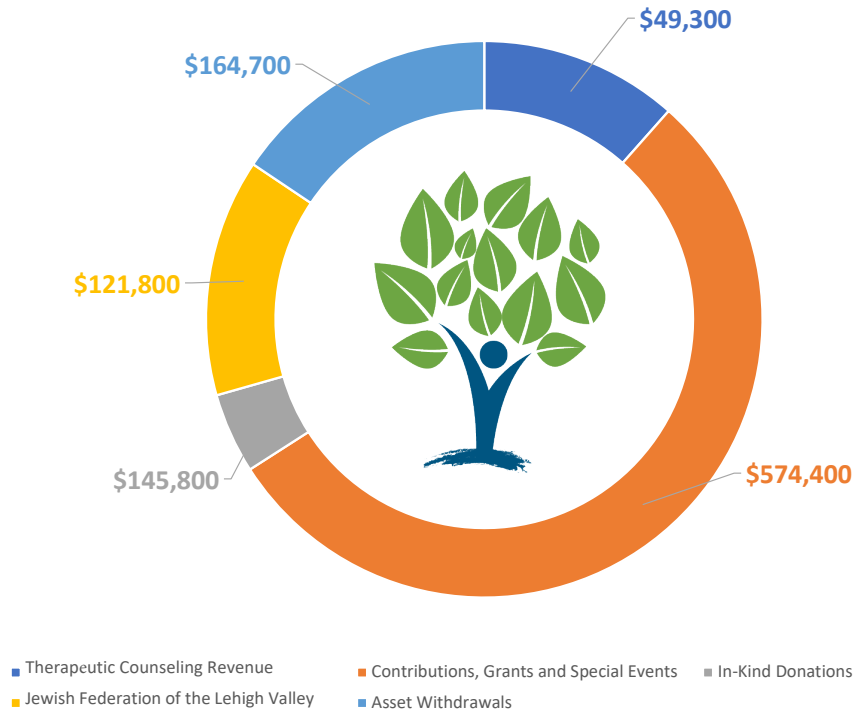
In honor of our 50th anniversary in 2022, we kicked off a year-long campaign to give back to the community.



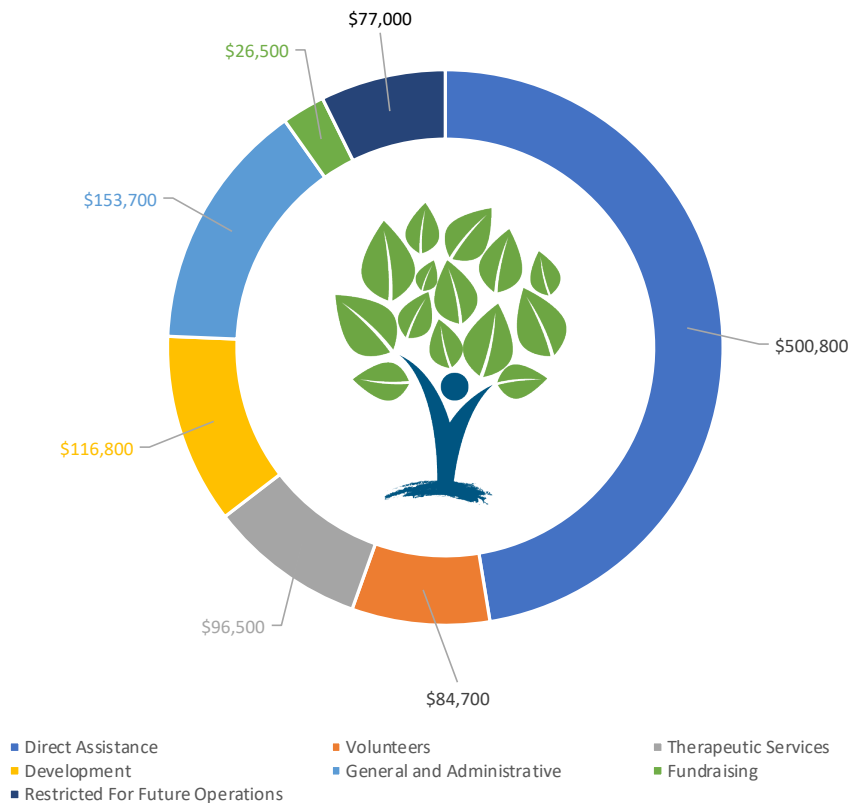


# FINANCIALS

## Funds Received: \$1,056,000



## Funds Disbursed: \$1,056,000





JEWISH FAMILY SERVICE  
★ OF THE LEHIGH VALLEY ★

Thank you to our partners



Jewish Federation  
OF THE LEHIGH VALLEY



NETWORK  
of Jewish Human  
Service Agencies

United Way of the  
Greater Lehigh Valley



Second Harvest  
**FOOD BANK**  
*of the Lehigh Valley and Northeast Pennsylvania*



2004 W Allen St. Allentown, PA 18104  
610.821.8722 | [info@jfslv.org](mailto:info@jfslv.org)  
[www.jfslv.org](http://www.jfslv.org)